

2019 Grant Recipients

Results

\$80,000 distributed

47 applicants - global, national, & local

24 applications approved

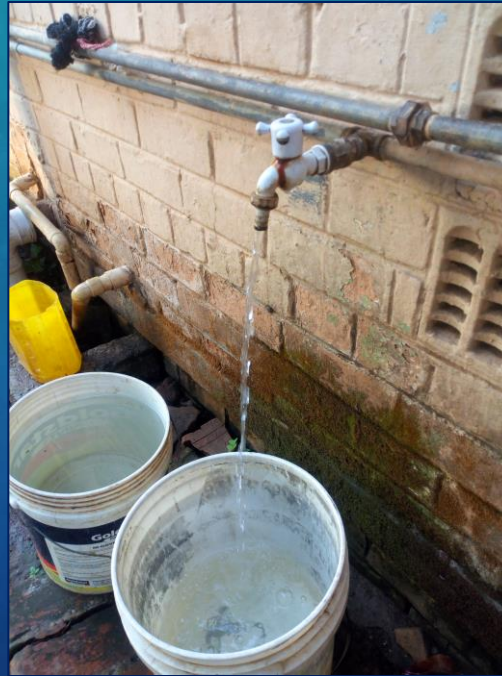
Bwafwano Care Providers

Funding provided classes for youth with special needs to learn to become self reliant. Crops were also planted and harvested in May and June providing income for their programs.



J. P. Schools - Zambia

Providing quality education to vulnerable & underprivileged children. Funds enabled the school to upgrade equipment for supplying and storing clean water and a printer for copying tests and assignments.





Uganda Counseling and Support Services

A tailoring center was renovated creating space for more students.
Fabric, machines and supplies were also purchased.

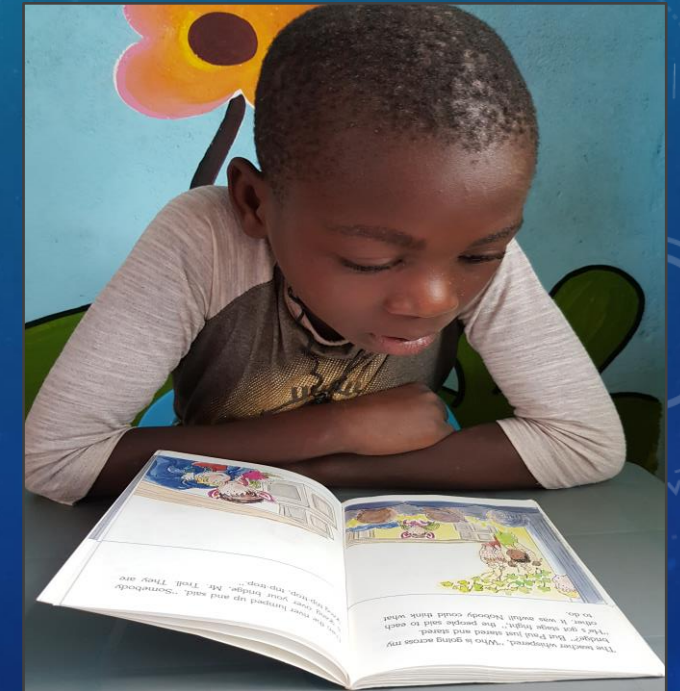
Wandikweza - Lilongwe, Malawi

The Ebenezer Community Library opened in November 2019 as the second library in all of Dowa District. The library is anchoring communities as children and parents from different communities, who were previously strangers, become friends.





Wandikweza #2: The Children's Corner is allowing children to develop the early literacy, communication & social skills needed to be ready to learn by the time they enter school.



Wandikweza #3: Our funds provided books, furniture, digital tablets, and paint for the walls in the Children's Corner.



Samuel Culpeper Methodist Church - Hatillo, Puerto Rico

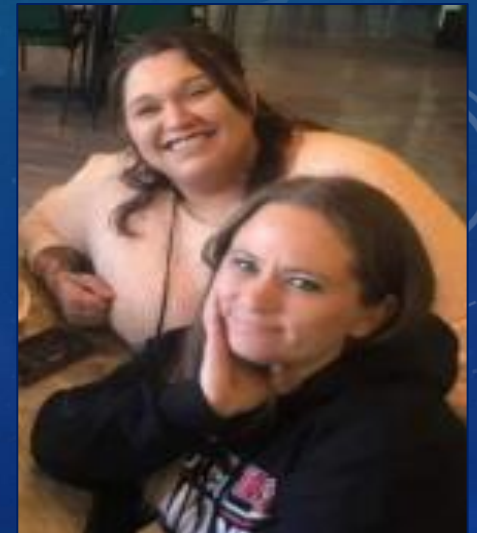
Seeking to transform communities by focusing on the healthy development of children and youth. Through their Bless the School project, the first musical classroom in a public school in their country was built. Our funds purchased instruments and air conditioning.





Amethyst Place

UMW funds offset the cost of supplies and meals for the Encompass mentoring program which pairs a mom recovering from substance abuse with two mentors. They model how healthy relationships can grow and be sustained over time.





Brothers in Blue/LEAD

(Ladies Empowered and Driven)

Enabling incarcerated women to grow spiritually and educationally through the Path to Freedom faith-based re-entry program. Our grant provided curriculum for the program which reduces recidivism among graduates.



Flourish Furnishings - Grandview, MO

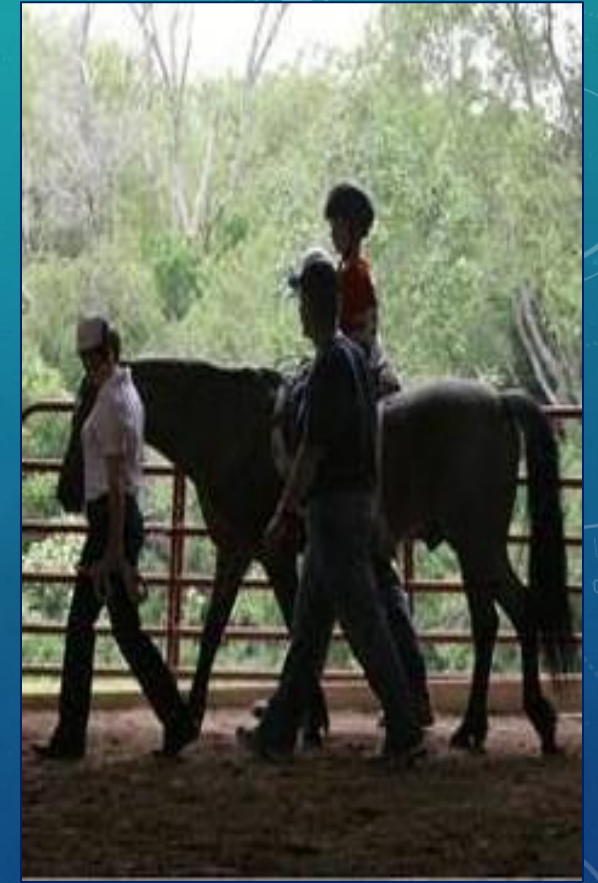
37 ready-to assemble dressers were purchased and assembled by volunteers.



Healing House

Serving double the number of participants due to the Covid-19 virus. Provided single moms with bassinets, car seats, dressers and diapers.



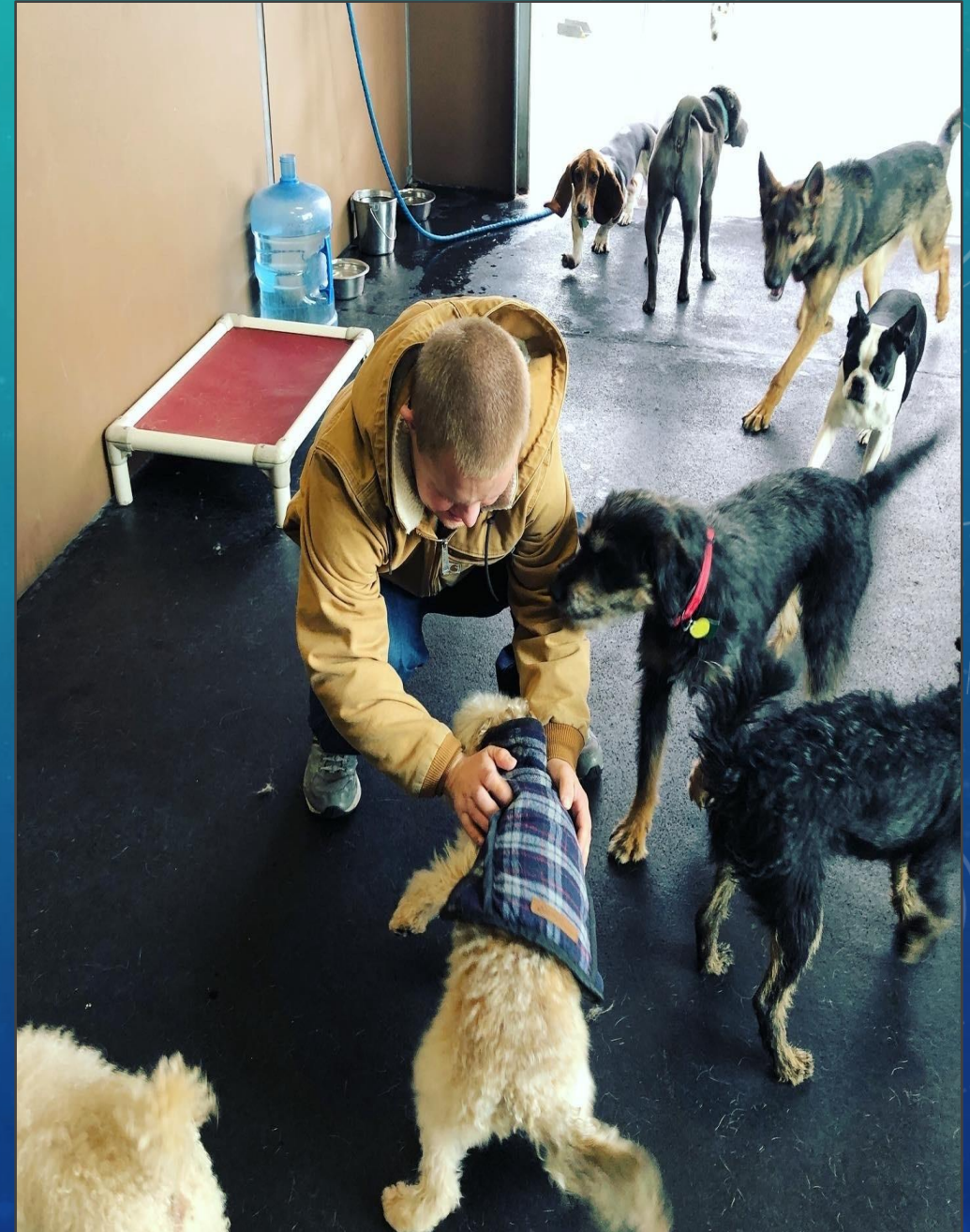


Heartland Therapeutic Riding Inc

Scholarships provided children and youth the chance to get some fresh air and exercise, to learn a new skill, to have some fun, and to interact with their horse and volunteers.

Inclusion Connections - Olathe, KS

Funds helped provide transportation for PawsAbility job trainees and employees.



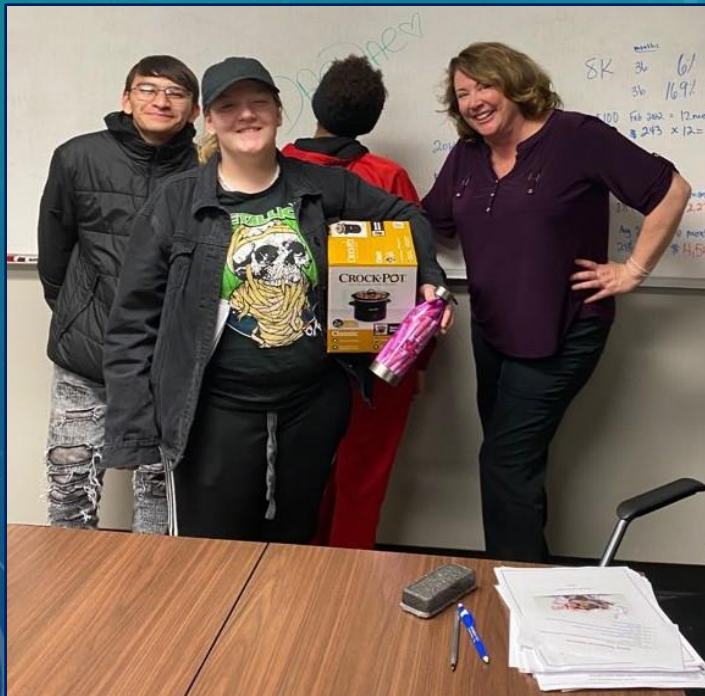


Inclusion Connections

More young adult jobholders and transportation vehicles.



Older youth attend Life Skills workshops covering topics such as healthy eating, financial literacy, advocating for educational needs, to enable a healthy transition to adulthood.





Kansas City Community Gardens

Empowering and inspiring low-income households, community groups, and schools in the KC Metropolitan area to grow their own vegetables and fruit. Impacting more than 32,000 households each year.



Marion Hope

This learning academy uses a model of inclusion where children with and without special needs can learn, laugh, and grow together. Technology allows students to improve communication skills and promote interaction.





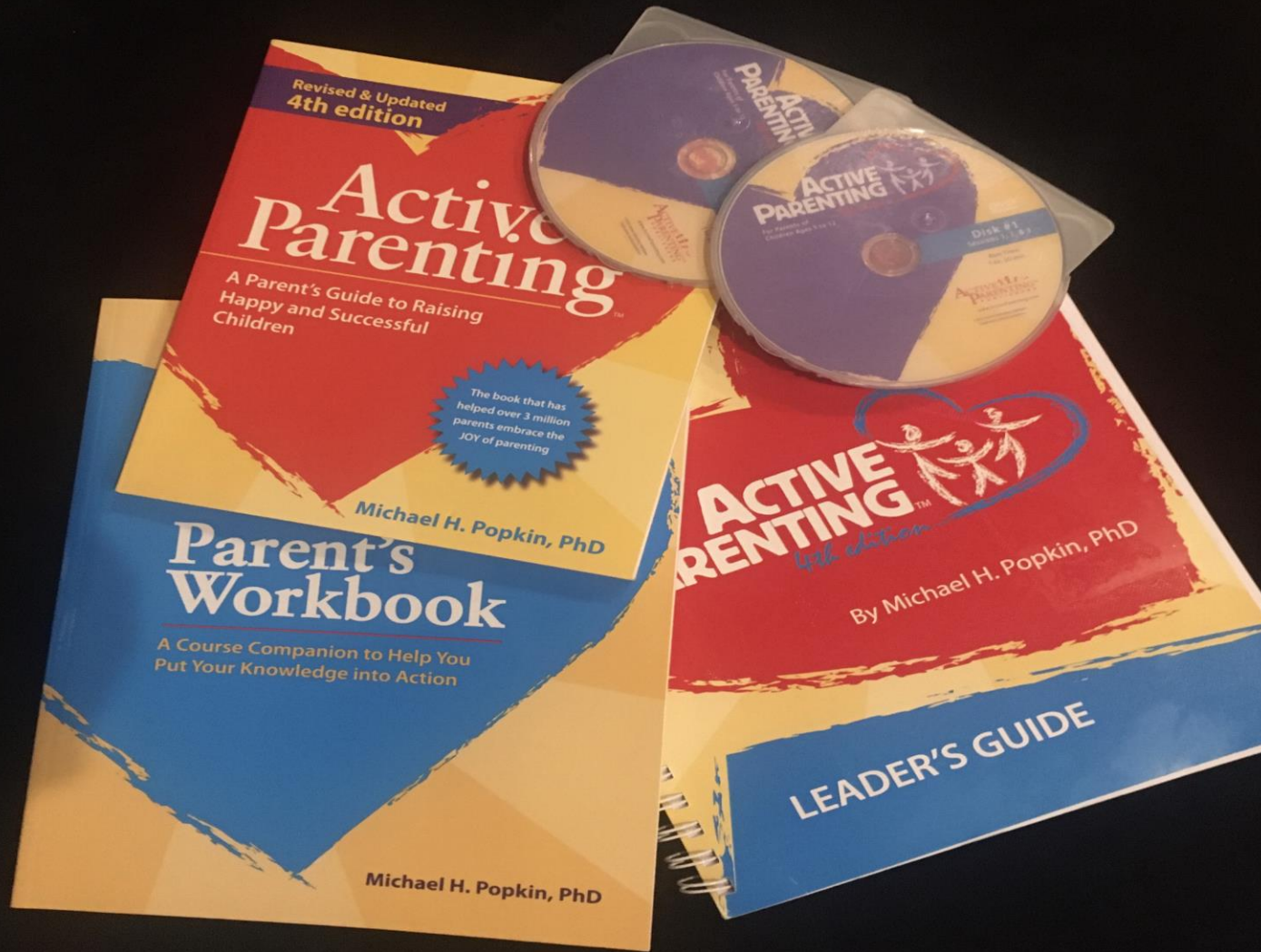
Migrant Farmworkers Assistance Fund

Our funding provided supplies for the Women's Group and Girls' Group programs, as well as healthy snacks and meals. Programming for teen girls helps them develop a sense of self worth along with skills for academic success.



Ministry to Incarcerated Families

Enabling incarcerated women to become more effective moms by offering parenting classes. Between 150-200 incarcerated women and their families benefit from the classes each year.



Young Women on the Move



Additional Grant Recipients

Grassroots - From the People, For the People - Tanzania

Two college scholarships for students being sponsored through Angel House Orphanage.

Pothawira International - Malawi:

A portable diagnostic ultrasound probe.

United Methodist Women in Malawi:

Tuition fees, tools, work suits and safety boots for underprivileged youth to attend vocational schools.

Avenue of Life - KCK

Wrap-around case management services.

Grace United Community Ministries - KCMO

A security system for the Grace campus, Chromebooks, Kindle tablets and headphones.

Pharmacy of Grace - Olathe

Prescription drugs for uninsured and underinsured women and children in Wyandotte County.